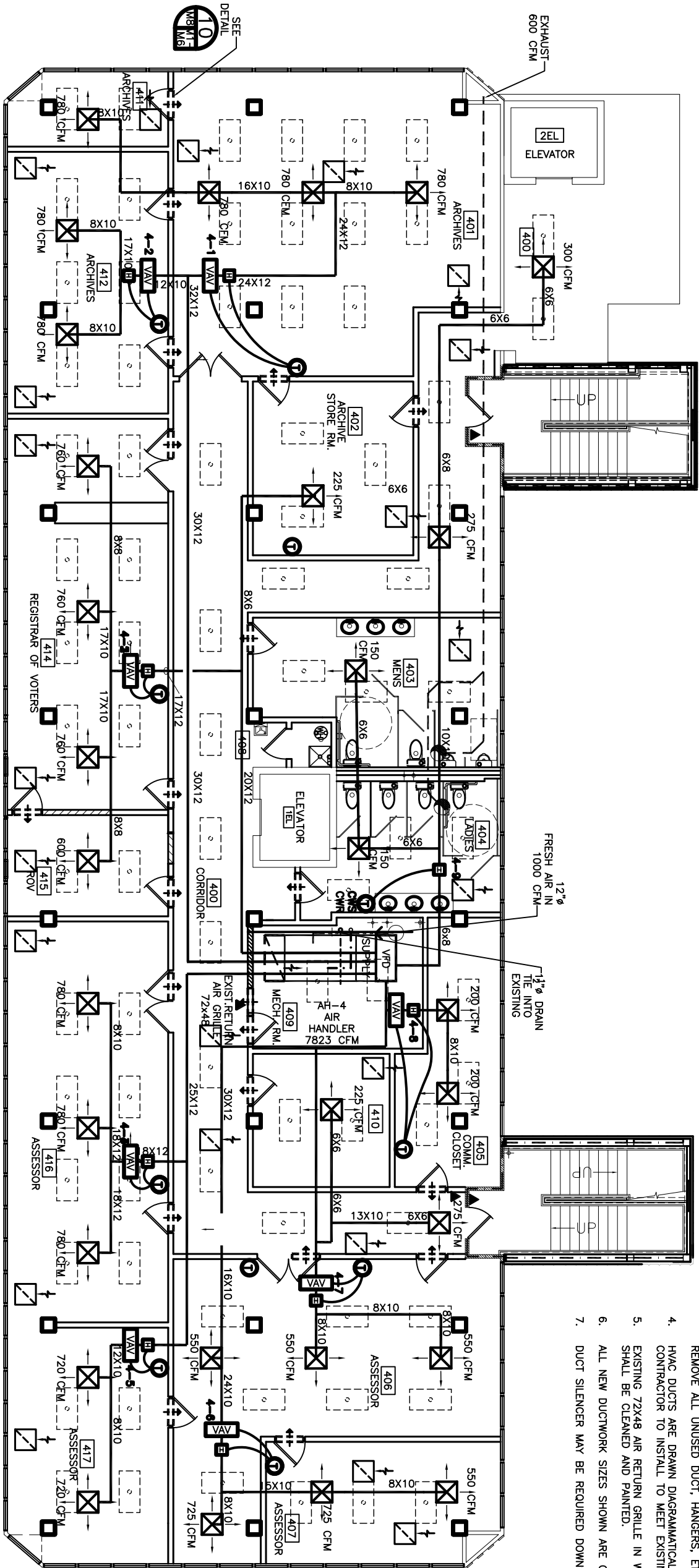


- NOTES:
- EACH ROOM TO HAVE AN OPENING BETWEEN ROOM CEILING SPACE AND HALL CEILING FOR RETURN AIR (32X12, TYP).
 - EXISTING DUCTWORK TO BE REUSED SHALL BE CLEANED PRIOR TO USAGE. SEE SPECIFICATIONS.
 - PORTIONS OF DUCTWORK NOT SHOWN AS BEING REUSED SHALL BE REMOVED, CLEANED AND REUSED IN OTHER LOCATIONS CALLING FOR THAT DUCT SIZE OR SMALLER. INSTALL CLOSURE PLATES AT ALL UNUSED OPENINGS IN DUCT NOT BEING REUSED. REMOVE ALL UNUSED DUCT, HANGERS, ETC. WHEN COMPLETE.
 - HVAC DUCTS ARE DRAWN DIAGRAMMATICALLY. CONTRACTOR TO INSTALL TO MEET EXISTING CONDITIONS.
 - EXISTING 72X48 AIR RETURN GRILLE IN WALL OF MECHANICAL ROOM SHALL BE CLEANED AND PAINTED.
 - ALL NEW DUCTWORK SIZES SHOWN ARE CLEAR INSIDE DIMENSIONS.
 - DUCT SILENCER MAY BE REQUIRED DOWNSTREAM OF VAV.



FOURTH FLOOR MECHANICAL PLAN
SCALE: 3/16"= 1'-0"

LEGEND



--- NEW HVAC SUPPLY DUCT
--- NEW EXHAUST DUCT

- THERMOSTAT
--- ELECTRIC DUCT HEATER
--- VARIABLE AIR VOLUME DAMPER

- EXHAUST BLOWER
--- VARIABLE FREQUENCY DRIVER

- RETURN AIR GRILLE TO BE TITUS #50 W/4 X 1/2 CORE HVAC
500 FPM MECH. VEL., TOT. PRESS. .032" H2O
24 X 24
--- RETURN AIR CASPED OPENING IN WALL -
(ROOM TO CEILING) -
TO EQUAL 200 SQ. IN.

4TH FLOOR HVAC EQUIPMENT- VAV & HEATERS					
ROOM	VAV NO.	COOL		HEATING	
		MBH	CFM	MBH	KW
401	4-1	67	3,120	10	3
412	4-2	34	1,560	7	2
414	4-3	62	2,880	11	3
416	4-4	50	2,340	9	3
417	4-5	31	1,440	5	2
E CORR.	4-6	43	2,000	7	2
406	4-7	24	1,100	4	1
409	4-8	9	400	5	1
404	4-9	-	-	5	N/A

--CARRIER PART NUMBERS OR EQUAL.

CONTRACT SET- 10/10/07

OF	M-4	SHEET	DATE:12-07-06	JOB NO. 1729	SCALE:AS NOTED
RENOVATE OFFICE BUILDING					
DAMMON ENGINEERING. INC.					
1095 FLORIDA AVENUE 985-649-5832 SLIDELL, LA. 70458					
DAMMONENGINEERING.COM					
4TH FLOOR MECHANICAL PLAN					
ST. TAMMANY PARISH ADMIN. COMPLEX					
520 OLD SPANISH TRAIL					
SLIDELL, LOUISIANA					